

FIGURE 1 – SourceRock project location map

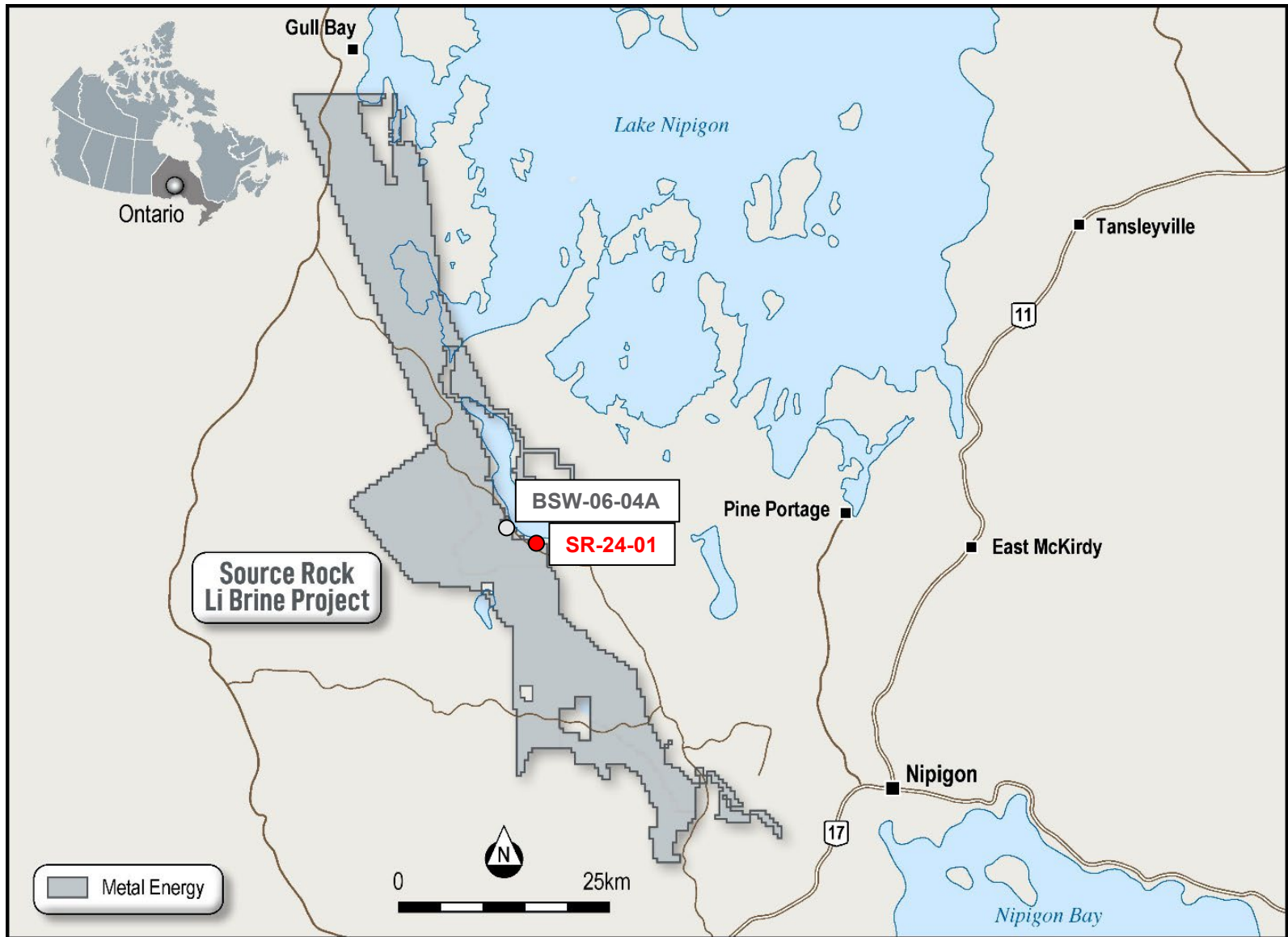


FIGURE 2 – Downhole geophysical data showing conductive fluids within the sediments from 150 to 165 m

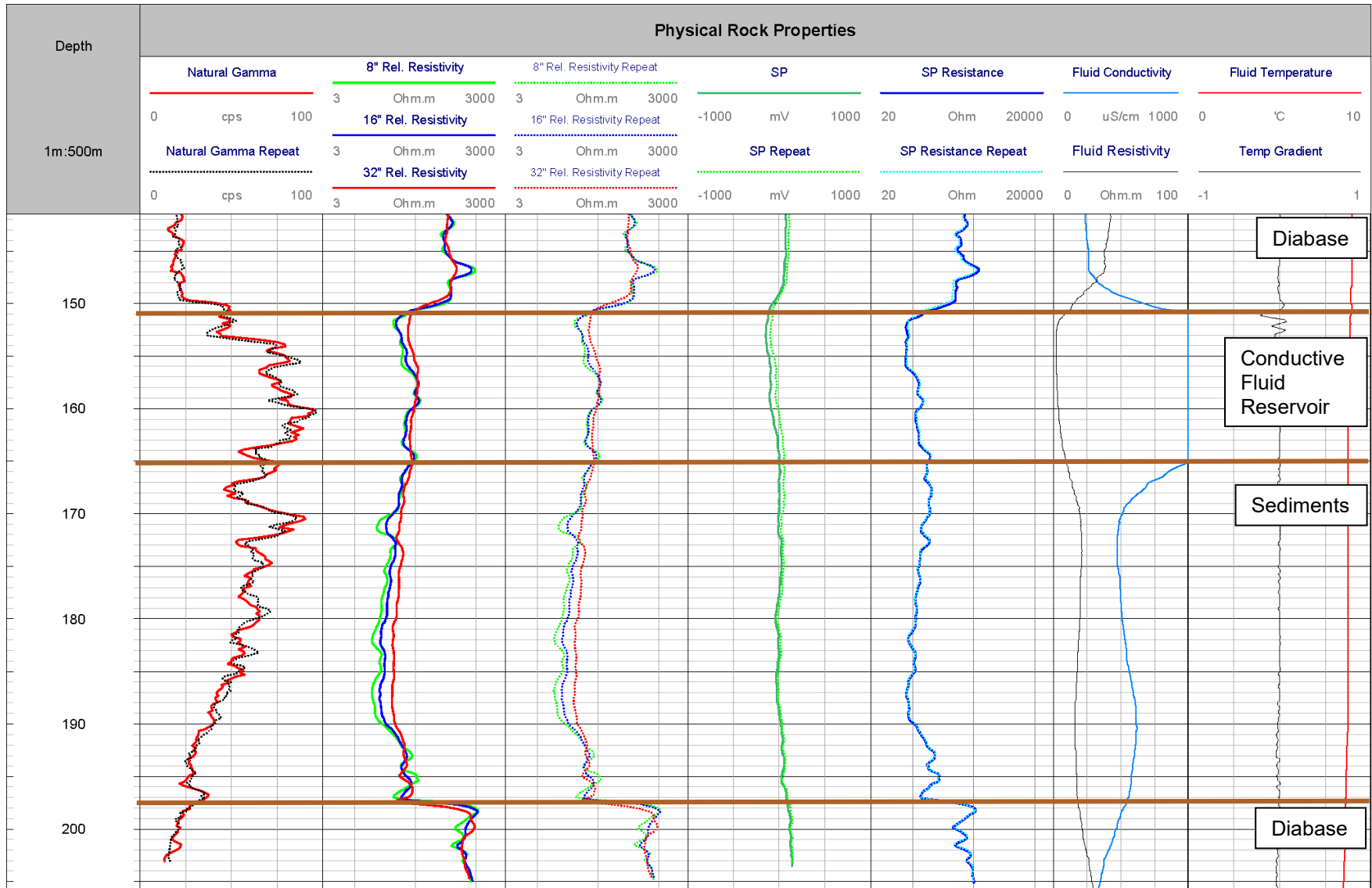


FIGURE 3 – Drill core from conductive fluid reservoir at ~153 m



FIGURE 4 – Downhole geophysical data showing conductive fluids within the sediments from 474 to 520 m

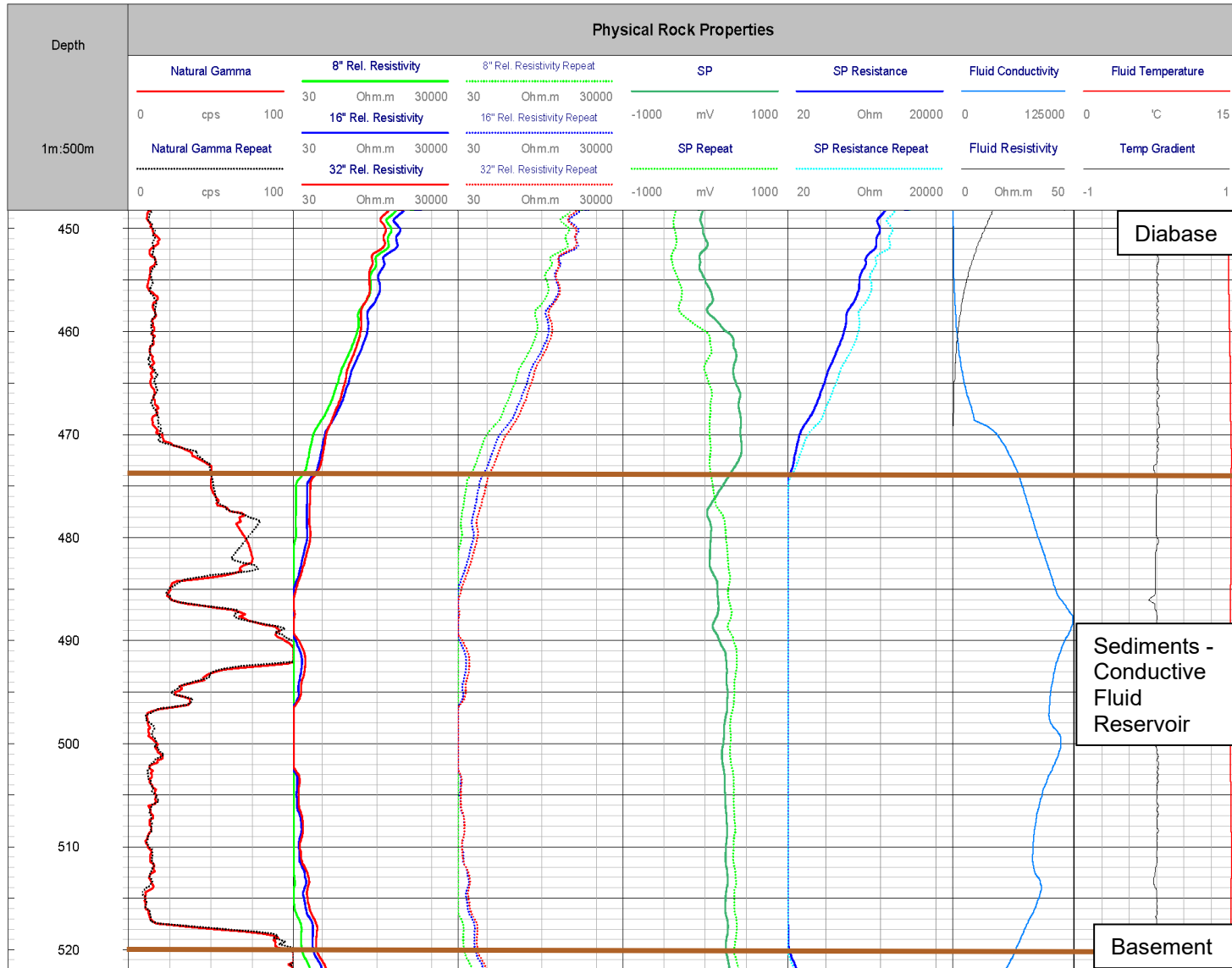


FIGURE 5 – Salt encrusting drill core above and below 519 m in conductive fluid reservoir

